



# INTERNET SECURITY SYSTEMS™

## INTERNET SCANNER™

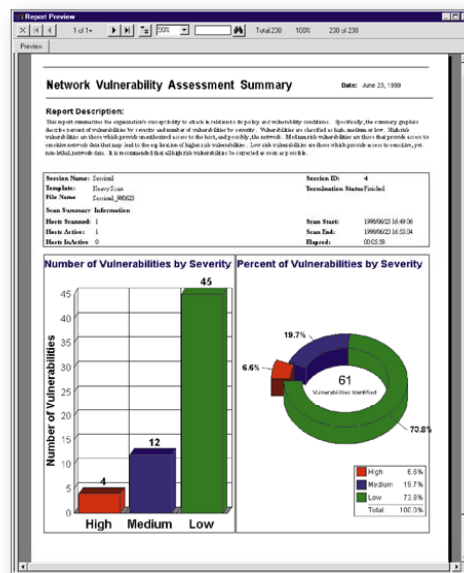
The **Internet Scanner™** application, an integrated part of Internet Security Systems' security management platform, provides comprehensive network vulnerability assessment for measuring online security risks. Internet Scanner performs scheduled and selective probes of communication services, operating systems, applications and routers to uncover and report system vulnerabilities that might be open to attack. In addition to providing flexible risk management reports, Internet Scanner prepares remediation advice, trend analyses and comprehensive data sets to support sound, knowledge-based policy enforcement. **X-Press Update™** enhancements, from ISS' **X-Force™** research and development team, ensure that Internet Scanner maintains a current defense against newly developed methods of attack.

**Proactive Security** – Internet Scanner automatically scans a network for vulnerabilities from a single, easy-to-use interface, and displays scan results and fix information in clear reports that allow users to respond quickly to critical vulnerabilities.

**Knowledge Is Power** – Knowledge is the critical first step to protecting the availability, integrity, and confidentiality of critical information assets. Internet Scanner's automated assessment and reporting incorporate Internet Security Systems' security expertise to provide customers the resources necessary to know their networks.

### The Internet Scanner Advantage

Internet Scanner performs scheduled or event-driven probes of network communication services, operating systems, routers, email, Web servers, firewalls and applications to identify weaknesses that could be exploited by intruders to gain access to the network. Regular use of Internet Scanner provides an ongoing analysis and control of network security. This information helps administrators and executives manage security policy as a progressive, evolutionary process.



Internet Scanner's reports produce detailed technical, operational and management information presented in a logical, easily understood format. Each report provides access to instructions for corrective action and vendor sites for security patches.

**Built-in expertise** – Internet Scanner incorporates Internet Security Systems' market-leading security expertise to automate the performance of a wide range of vulnerability checks. **SmartScan™** security data correlation detects interrelated network-based vulnerabilities, learns from vulnerabilities detected in previous scans, and builds on this knowledge to discover additional vulnerabilities that would otherwise go undetected. From its easy-to-use interface and assessment automation to the X-Force knowledge base and informative reports, Internet Scanner empowers users to protect their information assets.

**The most comprehensive list of vulnerability checks in the industry** - Greatly reduces the risk of missing an important weakness. A detailed knowledge base helps even relatively inexperienced administrators secure networks and develop enforceable network security practices. **FlexCheck™** capability provides additional coverage by allowing customers to write updates for custom applications.

**Automated X-Press Update Enhancements** – Regularly released X-Press Updates ensure that users have the most current vulnerability information available and allow existing deployments of Internet Scanner to stay abreast of the latest advances in Internet Security Systems' security expertise and technology.

**Session and policy wizards** – Wizards speed and simplify the creation of scanning sessions and policies, allowing users to easily match security practices with the particular needs and practices of their business and network.

**Integration with Database Scanner** – Integration with Internet Security Systems' **Database Scanner™** application provides additional for database servers.

**ActiveAlert™** – The ActiveAlert feature integrates Internet Scanner with Internet Security Systems' RealSecure monitoring technology to provide real-time notification of the most serious vulnerabilities.

**Fast, easily managed graphical reporting system** – Saves time and money by accelerating the auditing and enforcement process. Internet Scanner's selection of predefined reports provides different levels of reporting for different audiences (technical detail for security experts, higher-level trend analyses for executive summaries). Clear graphical reports allow users to quickly determine security status of their network, while detailed fix information speeds remediation. Reports are also exportable to multiple formats for easy distribution.

**Scalable** – Internet Scanner grows with your organization, from smaller networks to enterprise installations. Multiple scanning levels allow administrators to configure the amount of desired scanning by specific time, breadth or detail. Parallel scanning executes multiple scans of large networks simultaneously and easily, checking for and reporting common vulnerabilities in devices across the enterprise and maximizing Internet Scanner's return on investment.

**TCP/IP, Router, Unix and Windows NT/2000 tests from a single application** – Helps maximize security coverage, control expense, and simplify training and deployment. Hot links to vendor patches simplify and speed the adoption of network security enhancements.

**Backed by the ISS X-Force** – ISS' X-Force delivers world-class security research and development for all Internet Security Systems' offerings. The X-Force is ISS' team of leading computer security scientists and intelligence officers. These information security professionals provide an invaluable edge in managing online risk and protecting key online digital assets. For more information about the ISS X-Force, visit the X-Force Web site at [xforce.iss.net](http://xforce.iss.net).

## Scan Categories

- Brute Force Password-Guessing
- Critical NT Issues
- Daemons
- DCOM
- Denial of Service
- DNS
- Email
- Firewalls
- FTP
- IP Spoofing
- NetBIOS
- Network
- NFS
- NetBIOS Shares
- NT Users, Groups, and Passwords
- NT Networking
- NT Registry
- NT Services

- Port Scans
- RPC
- Web Browser Vulnerabilities and Security Zones
- Web Server Scan, Proxy, and CGI-Bin
- X Windows

## System Requirements

Internet Scanner system requirements are available online in the Product Literature section of the Internet Security Systems Web site at [www.iss.net](http://www.iss.net).

## Get Started Today

To get started securing your information with Internet Security Systems' Internet Scanner, contact an ISS security consultant at 800-776-2362.

## About Internet Security Systems (ISS)

Founded in 1994, Internet Security Systems (ISS) (Nasdaq: ISSX) is a world leader in software and services that protect critical online resources from attack and misuse. ISS is headquartered in Atlanta, GA, with additional operations throughout the United States and in Asia, Australia, Europe, Latin America and the Middle East.

*Copyright © 1992 - 2001, Internet Security Systems, Inc. All rights reserved worldwide.*

*Internet Security Systems, the Internet Security Systems logo, X-Force, Internet Scanner, Database Scanner, ActiveAlert, X-Press Update, FlexCheck, and SmartScan are trademarks and service marks of Internet Security Systems, Inc. Other marks and trade names mentioned are marks and names of their owners as indicated. All marks are the property of their respective owners and used in an editorial context without intent of infringement. Specifications and content are subject to change without notice.*